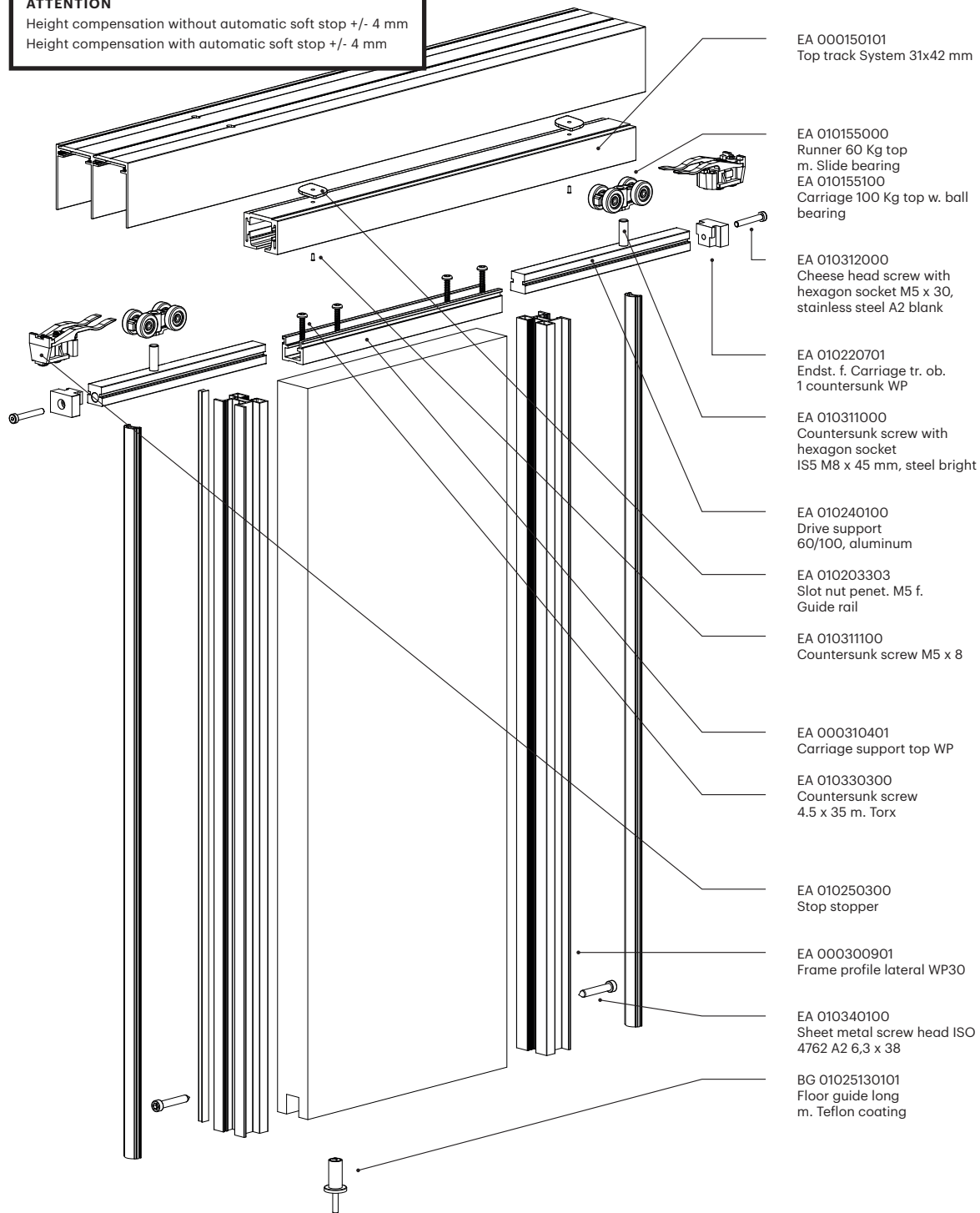


Honeycomb panel sliding door

WP30 top running

ATTENTION

Height compensation without automatic soft stop +/- 4 mm
 Height compensation with automatic soft stop +/- 4 mm



EA 000150101
 Top track System 31x42 mm

EA 010155000
 Runner 60 Kg top
 m. Slide bearing
 EA 010155100
 Carriage 100 Kg top w. ball
 bearing

EA 010312000
 Cheese head screw with
 hexagon socket M5 x 30,
 stainless steel A2 blank

EA 010220701
 Endst. f. Carriage tr. ob.
 1 countersunk WP

EA 010311000
 Countersunk screw with
 hexagon socket
 IS5 M8 x 45 mm, steel bright

EA 010240100
 Drive support
 60/100, aluminum

EA 010203303
 Slot nut penet. M5 f.
 Guide rail

EA 010311100
 Countersunk screw M5 x 8

EA 000310401
 Carriage support top WP

EA 010330300
 Countersunk screw
 4.5 x 35 m. Torx

EA 010250300
 Stop stopper

EA 000300901
 Frame profile lateral WP30

EA 010340100
 Sheet metal screw head ISO
 4762 A2 6,3 x 38

BG 01025130101
 Floor guide long
 m. Teflon coating

Honeycomb panel sliding door

WP30 top running

Wing dimension

Wing width (FB)
 $AB + (\text{number of projections} \times 10 \text{ mm})$: Number of wings

Wing height
 AH - 78 mm

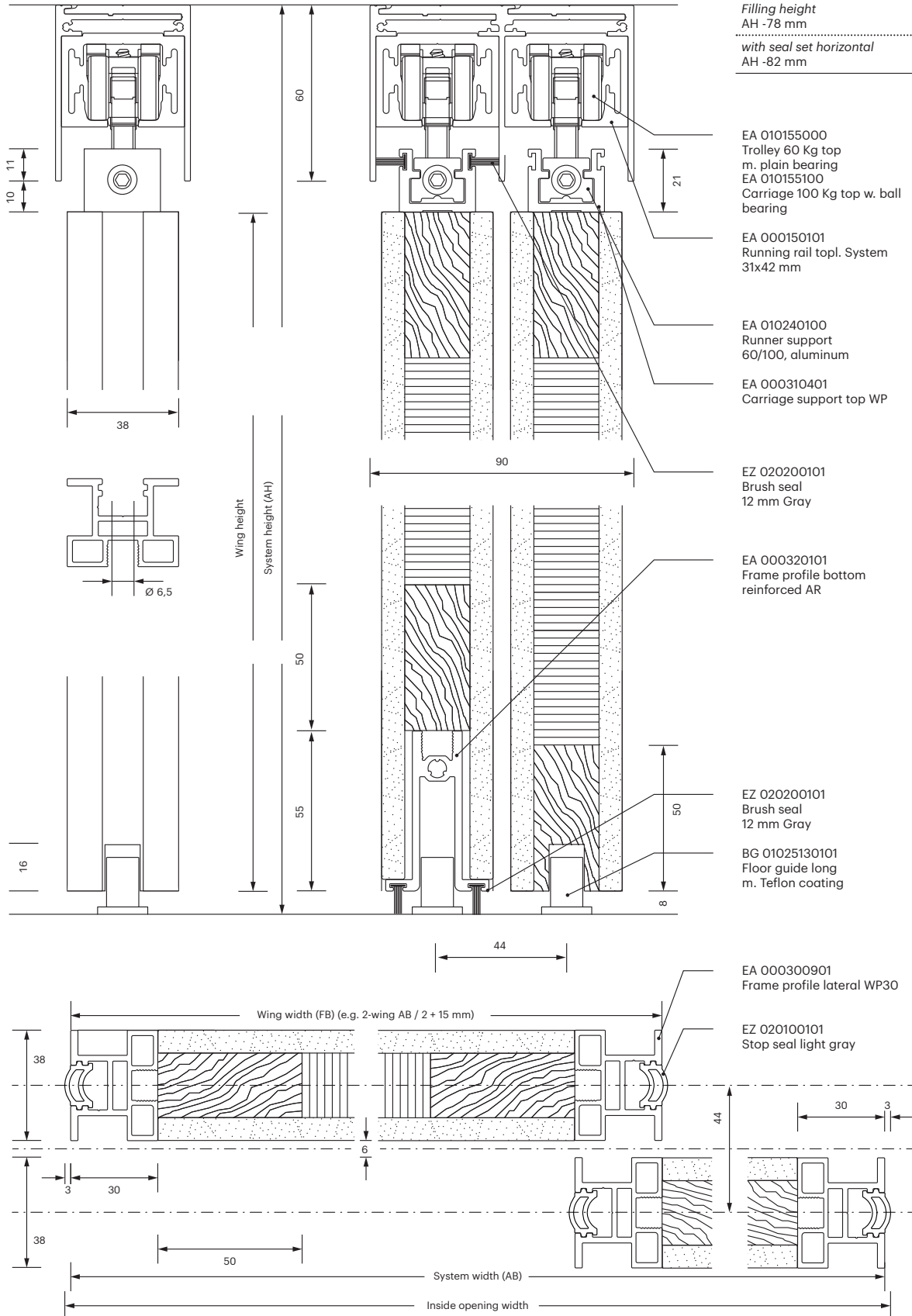
Filling dimension

Filling width
 FB - 60 mm

Filling height
 AH - 78 mm

with seal set horizontal
 AH - 82 mm

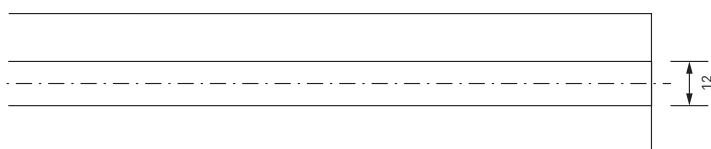
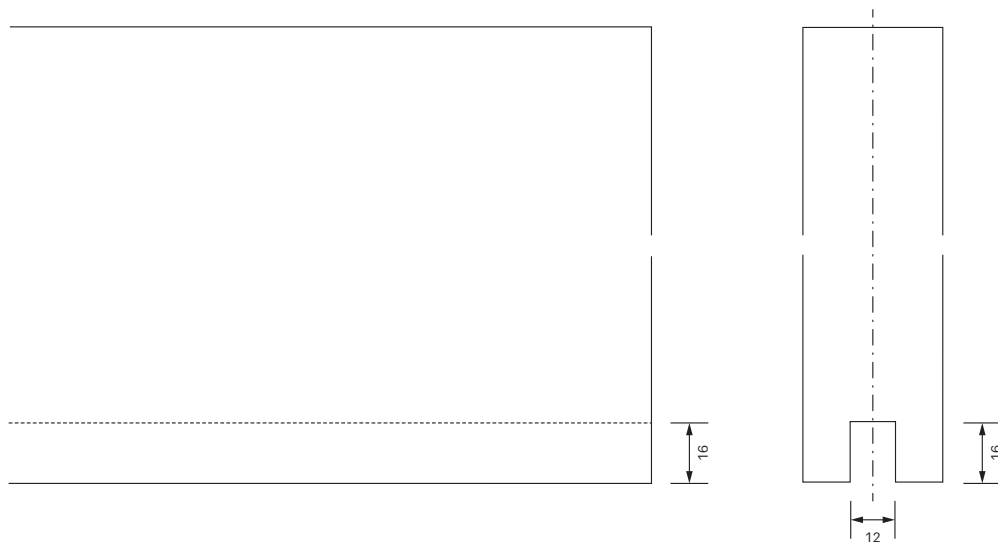
i All dimensions in millimeters



Honeycomb panel sliding door

WP30 top running

i All dimensions in millimeters



Gasket set horizontal

